

ramplo



**WORLD FAMOUS
WAREHOUSE
EQUIPMENT**



ramplo.net

ramplo

RAMPLO – is a world known producer of high quality warehouse equipment. We offer a unique combination of low prices and excellent quality.

The core advantages of our products and offerings:

- high quality of a whole product line of the equipment under TM RAMPLO;
- minimally possible prices;
- the most popular models are always in stock;
- personal approach to customers, since our dealers know their local market much better than anybody else;
- superb pre- and after-sales service.

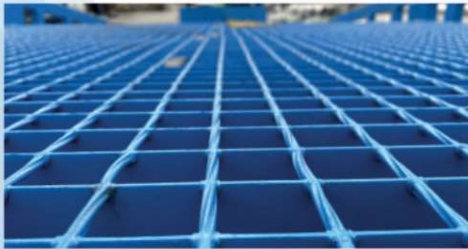
We can supply any type of equipment with unique characteristics. Our products are well known in Europe, America and Asia. RAMPLO equipment is sold only through dealers.



Mobile ramps RAMPLO – RL-MR

The mobile ramp RAMPLO is special equipment that allows a forklift to load and unload trucks, railway wagons, driving inside it from the ground level. The mobile ramp works as a mobile bridge and can be adjustable in height.

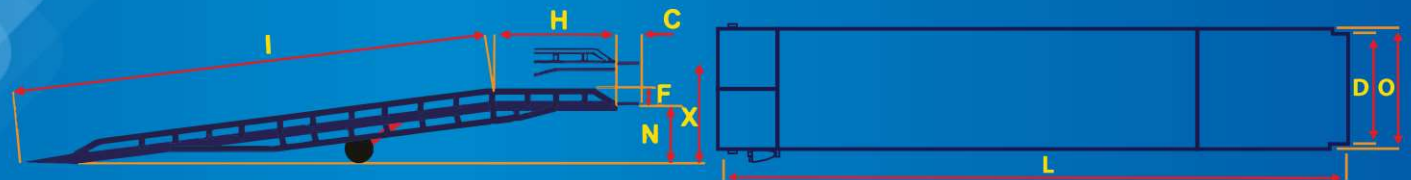
We manufacture a wide range of mobile ramps. Thus, our customers can choose that solution that fully meets their needs. Moreover, we can manufacture custom mobile ramps based on individual customer requests, and complement such equipment with any available options.



RL-MR-STD8 is the most popular model with shortest production time or even availability on stock.

#	Model *	Weight capacity, tons	I	H	C	L	D	O	N	X
1	RL-MR-STD6	6	8010	2230	270	10510	1990	2230	890	1640
2	RL-MR-STD8	8	8010	2230	270	10510	1990	2270	890	1640
3	RL-MR-STD10	10	8510	2430	270	11210	1990	2310	890	1640
4	RL-MR-STD12	12	8510	2430	270	11210	1990	2350	890	1640
5	RL-MR-SML6	6	8010	730	270	9010	1990	2230	890	1640
6	RL-MR-SML8	8	8010	730	270	9010	1990	2270	890	1640
7	RL-MR-SML10	10	8510	730	270	9510	1990	2310	890	1640
8	RL-MR-SML12	12	8510	730	270	9510	1990	2350	890	1640
9	RL-MR-BIG6	6	9210	2530	270	12010	1990	2230	890	1640
10	RL-MR-BIG8	8	9210	2530	270	12010	1990	2270	890	1640
11	RL-MR-BIG10	10	9910	2830	270	13010	1990	2310	890	1640
12	RL-MR-BIG12	12	9910	2830	270	13010	1990	2350	890	1640

* we also make individual ramps - shorter / longer, wider / narrower, higher / lower, other loading capacity and configuration.



Fixed ramps RAMPLO (without horizontal part) - RL-FX

To connect the ground level and a warehouse level, we manufacture the stationary loading ramp RL-FX, which consists only of an inclined part and a small connecting bridge.

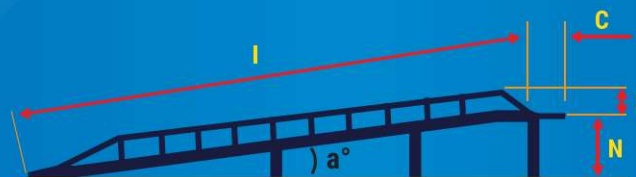
Features of the stationary loading ramps RAMPLO RL-FX:

- wholly steel frame;
- no need in concrete fixing;
- weight capacity from 6 to 10 tons and even more;
- length from 8,3 to 12,3 meters and even longer;
- width of riding surface from 2,0 to 2,2 meters and wider;
- loading is distributed regularly overall several point of support;
- protective border through whole length of the ramp for safe work;
- special connection bridge with 12-16 mm thickness;
- riding surface is made from gratings and serrated steel sheets.



#	Model*	Loading capacity, tons	I	C	L	D	O	N
1	RL-FX-6000-80	6	8000	270	8270	2000	2230	1200
2	RL-FX-6000-100	6	10000	270	10270	2000	2230	1200
3	RL-FX-6000-120	6	12000	270	12270	2000	2330	1200
4	RL-FX-8000-80	8	8000	270	8270	2000	2250	1200
5	RL-FX-8000-100	8	10000	270	10270	2000	2250	1200
6	RL-FX-8000-120	8	12000	270	12270	2000	2250	1200
7	RL-FX-10000-80	10	8000	270	8270	2000	2270	1200
8	RL-FX-10000-100	10	10000	270	10270	2000	2270	1200
9	RL-FX-10000-120	10	12000	270	12270	2000	2270	1200

* we also make individual ramps - shorter / longer, wider / narrower, higher / lower, other loading capacity and configuration



Fixed ramps RAMPLO (WITH horizontal part) - RL-FXH

For those customers who do not need mobility, and height adjustment of the ramp is not so important, we can offer the fixed ramp RAMPLO RL-FXH with a horizontal board that allows aligning the position of a forklift just before driving inside of a truck or a warehouse. Horizontal level-off of ramp RL-FXH give ability for forklift driver to center its position before entering/leaving dock or truck/wagon, therefore its forks will be parallel to horizontal and will prevent damage of goods and equipment. Ramps RAMPLO RL-FXH are fixed by bolts (to dock) or chains (to truck). Connection bridge made from 16 mm thick steel sheet with anti-slip surface, which acts as interfacial link between ramp and object (dock, truck or wagon).

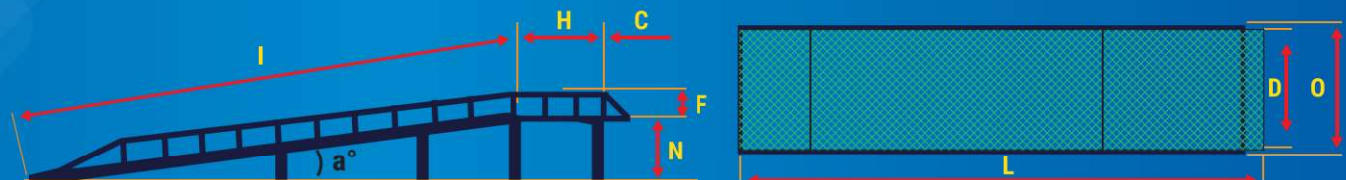
Features of the stationary loading ramps RL-FXH:

- wholly steel frame;
- no need in concrete fixing;
- horizontal level-off for safe maneuvers of forklift;
- weight capacity from 6 to 10 tons and even more;
- length from 10,8 to 12,8 meters and even longer;
- width of riding surface from 2,0 to 2,2 meters and wider;
- loading is distributed regularly overall several point of support;
- protective border through whole length of the ramp for safe work;
- special connection bridge with 12-16 mm thickness;
- riding surface is made from gratings and serrated steel sheets.



#	Model*	I	H	C	L	D	O	N
1	RL-FXH-6000-8025	8000	2500	270	10770	2000	2230	1200
2	RL-FXH-6000-10025	10000	2500	270	12770	2000	2230	1200
3	RL-FXH-8000-8025	8000	2500	270	10770	2000	2250	1200
4	RL-FXH-8000-10025	10000	2500	270	12770	2000	2250	1200
5	RL-FXH-10000-8025	8000	2500	270	10770	2000	2270	1200
6	RL-FXH-10000-10025	10000	2500	270	12770	2000	2270	1200

* we also make individual ramps - shorter / longer, wider / narrower, higher / lower, other loading capacity and configuration



The mobile ramp RAMPLO (custom request) - RL-SPCL

The products RAMPLO are represented not only by standard models. Our company can manufacture individual orders taking into account all customer requirements.




Along with standard ramps, we design and produce ramps with individual sizes and characteristics. With more than 10 years of expertise, our engineers and designers have been developing mobile and fixed ramps of any complexity and load capacity.

The characteristics of the ramps RAMPLO, which can be amended upon customer's request:

- load capacity - from 6 to 30 tones and more;
- total length - in case of special needs up to 15 meters and more;
- overall width - up to 2950 mm and more;
- height of protective fencing - minimum 0mm, maximum 1000 mm;
- heights' level - min and max heights, the working range of hydraulics no more than 80 cm. For example, the minimum height is 750 mm, maximum (in this case) – 1550 mm; The max height in standard ramps is 1750mm! It's optimal not only for trucks, but even for railway carriage!
- and other amendments according to customer wishes.



Additional options for mobile (RL-MR, RL-SPCL) and fixed (RL-FX, RL-FXH) ramps

Option		Image	Model			
			RL-MR	RL-SPCL	RL-FX	RL-FXH
Supporting legs adjustable in height, installed on ramp. Just increase safety.	-2SL		✓	✓		
3-sided (including legs -2SL) Side bridges adjustable for purpose of 3-side entrance for forklift, installed on ramp with supporting legs.	-2SL3SW		✓	✓		✓
Electrohydraulic Electric hydraulic station instead of manual pump. Faster lifting, requires 380V/220V power connection.	-EHP		✓	✓		
Additional railing Additional protective hand railings, 900 mm height, mountable. Recommended if pedestrians will walk on the ramp.	-HR		✓	✓	✓	✓
Additional pair of wheel 4 instead of 2 wheels. Recommended for usage on non-solid surfaces.	-4WL		✓	✓		
Anti-skid grating instead of standard Serrated grating. Guarantees additional comfort in winter use.	-SRS		✓	✓	✓	✓
Zinc coated riding surface instead of painted Zinc coated riding surface (A+B)*F instead of painting. Recommended for long-term and hard usage outdoor.	-ZRS		✓	✓	✓	✓
Zinc coated riding and anti-skid surface instead of regular painted	-ZSRS		✓	✓	✓	✓
Tent above the carriageway of the ramp Protect forklift and cargo from different falls (snow, rain, etc). Mountable on the ramp.	-TC		✓	✓	✓	✓

RAMPLO warehouse equipment enlarge assortment of its products

Van ramps RL-LCVR



This is special designed truck ramp for loading/unloading commercial vehicles at standard dock gates of modern warehouses. Our equipment helps to eliminate difference in heights of commercial vehicles (500-700 mm) and height of dock gates, dedicated for big semi-trailers (1100-1200 mm).

Loading modular platforms RL-LMP



Enlarge dock area for better approach of truck, more space for warehouse technics maneuvering and extending area for actions with goods before or after loading/unloading to/from truck.

Fixed “ground-dock” ramps RL-GD



For driving forklifts, vans, cars and other transport inside and outside warehouse. Connects 0 ground level and height of warehouse (usually about 1200 mm).

Dock levelers RL-DCKL



Provide smooth connection of truck body and floor level of modern warehouses. Electro-hydraulics for easy, safe and fast operation of your technics and stuff.

Lifting tables RL-LT



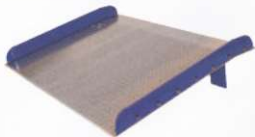
Electric hydraulic lifting tables carry up to 3000 kg. Ideal for limited spaces inside plants, no need in long incline parts. Put heavy goods on required height, load cargoes from ground to truck body – it will help.

Loading bridges RL-LB



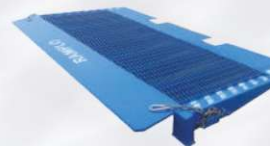
Installing on edge of dock gate, no need in pitch and electricity. Saves space and upgrades customer warehouse abilities when it is needed.

Mobile bridges RL-MB



Cheap, safe and easy connection of dock & truck levels. No need in mounting. No need in power supply.

Container ground bridges RL-CGB



Connect 0 ground level and floor of sea container, which stays on ground. Safe and simple way to load/unload sea containers.

All products can be customizable according to buyer requirements. Wider, longer, heavier, lighter, bigger, smaller ... etc. We can do it!



ramplo

ramplo.net

Contact your dealer:



Okeanos LC OÜ
Ain Adamson
Võru 15a, Tartu, Estonia
Tel: +372 5120470
ain.adamson@okeanos.ee

